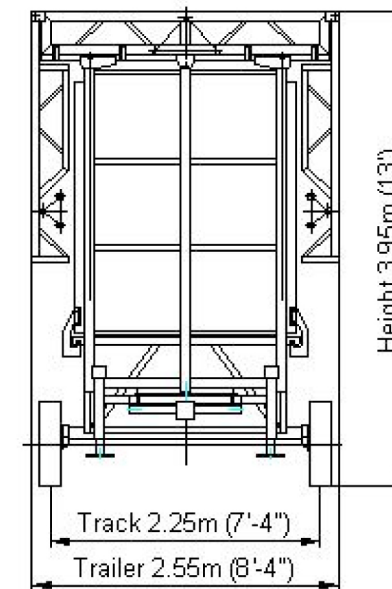
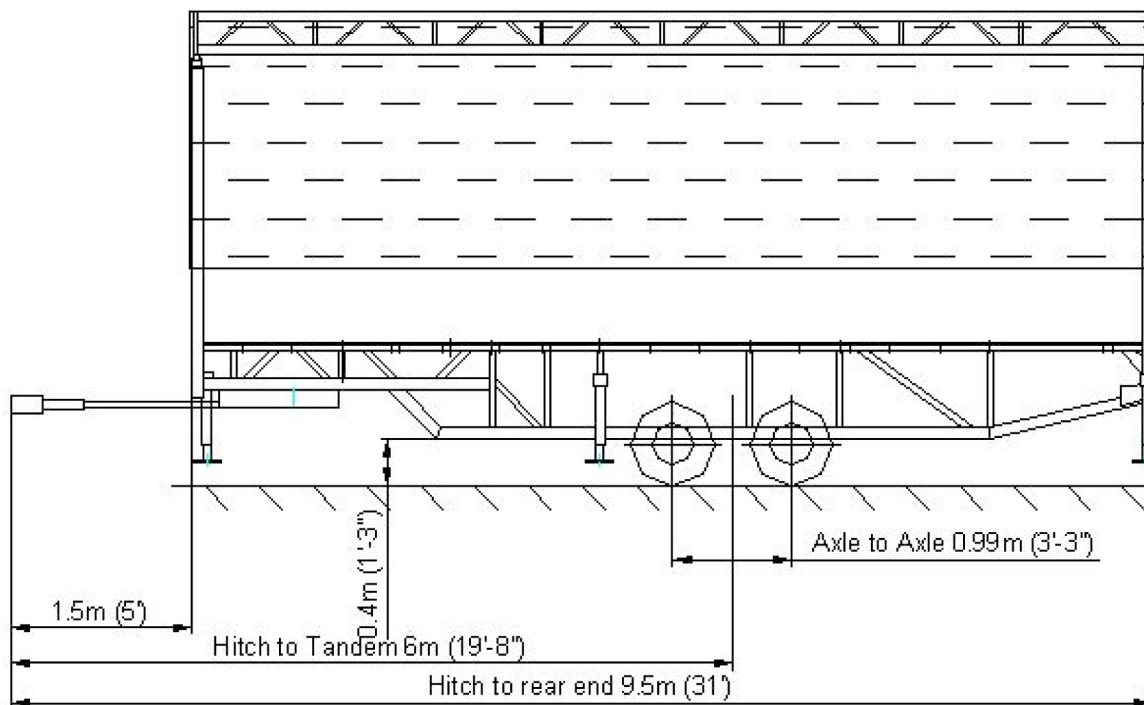




www.mobilestagemanufacturing.com  
 100 Eads St. West Babylon, NY 11704  
 (516) 882-5412  
 Info@MobileStageManufacturing.com

## Mass and Dimensions – Stagemobil XL



### Mass

kg

Lbs

Vehicle Mass	4000	8800
Net weight	3500	7720
Allowable Load on Axle	2500	5500

Standard: 2 axles

### Note

1. Mass may vary depending of options.

Stage specifications subject  
 To change without notice  
 Figures are within inch or  
 cm to actual size

©2008 – Allrights reserved, Karl Eckart Fahrzeugbeu GmbH. Any and all forms of adaption or reproduction of this document including plans and drawings found herein, in whole or in part, are strictly forbidden without the written authorisation of Karl Eckart Fahrzeugbau GmbH.

Date: 2008-02-05  
 Revision 0



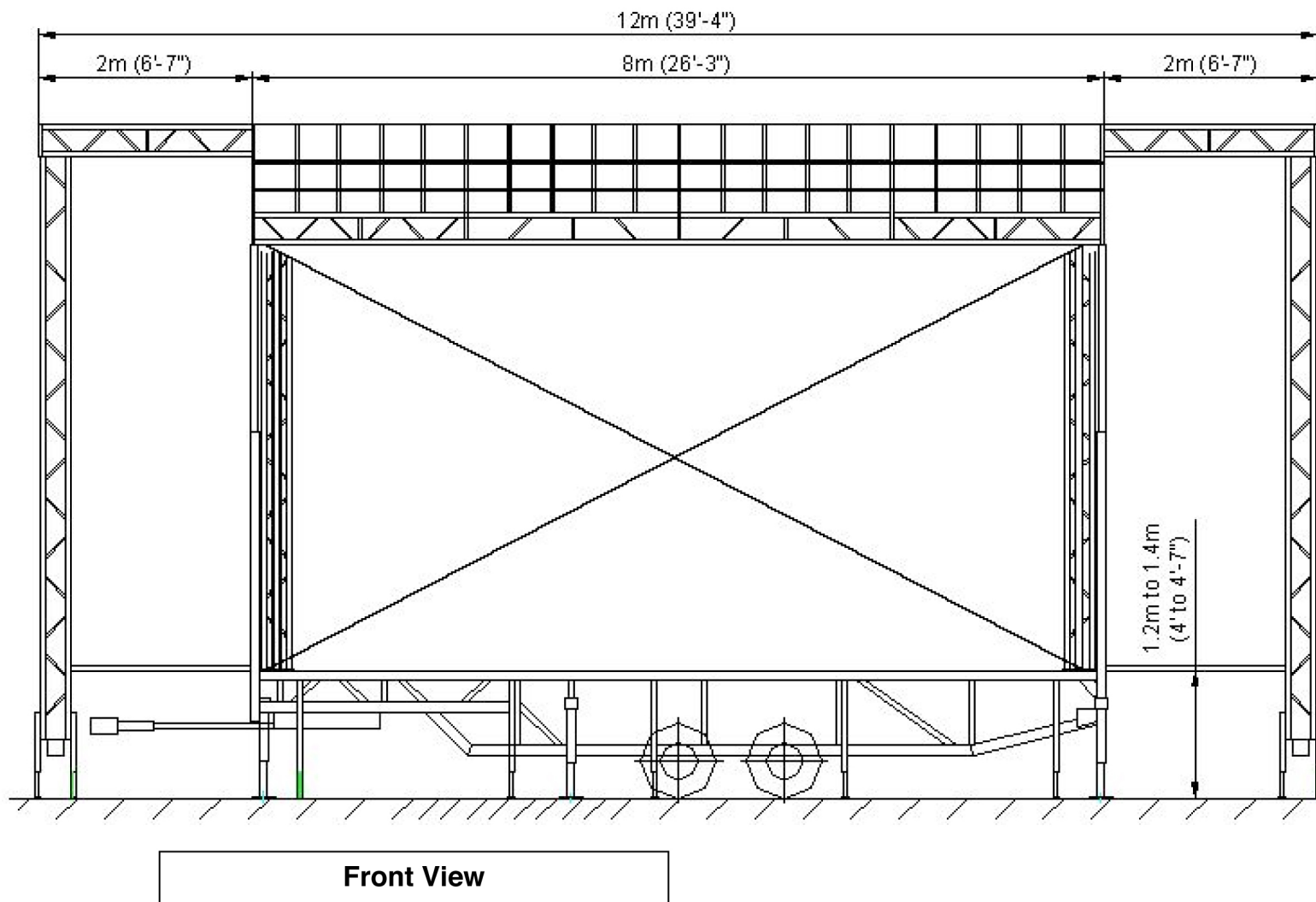
www.mobilestagemanufacturing.com

100 Eads St. West Babylon, NY 11704

(516) 882-5412

Info@MobileStageManufacturing.com

## Stagemobil XL



Stage specifications subject  
To change without notice  
Figures are within inch or  
cm to actual size

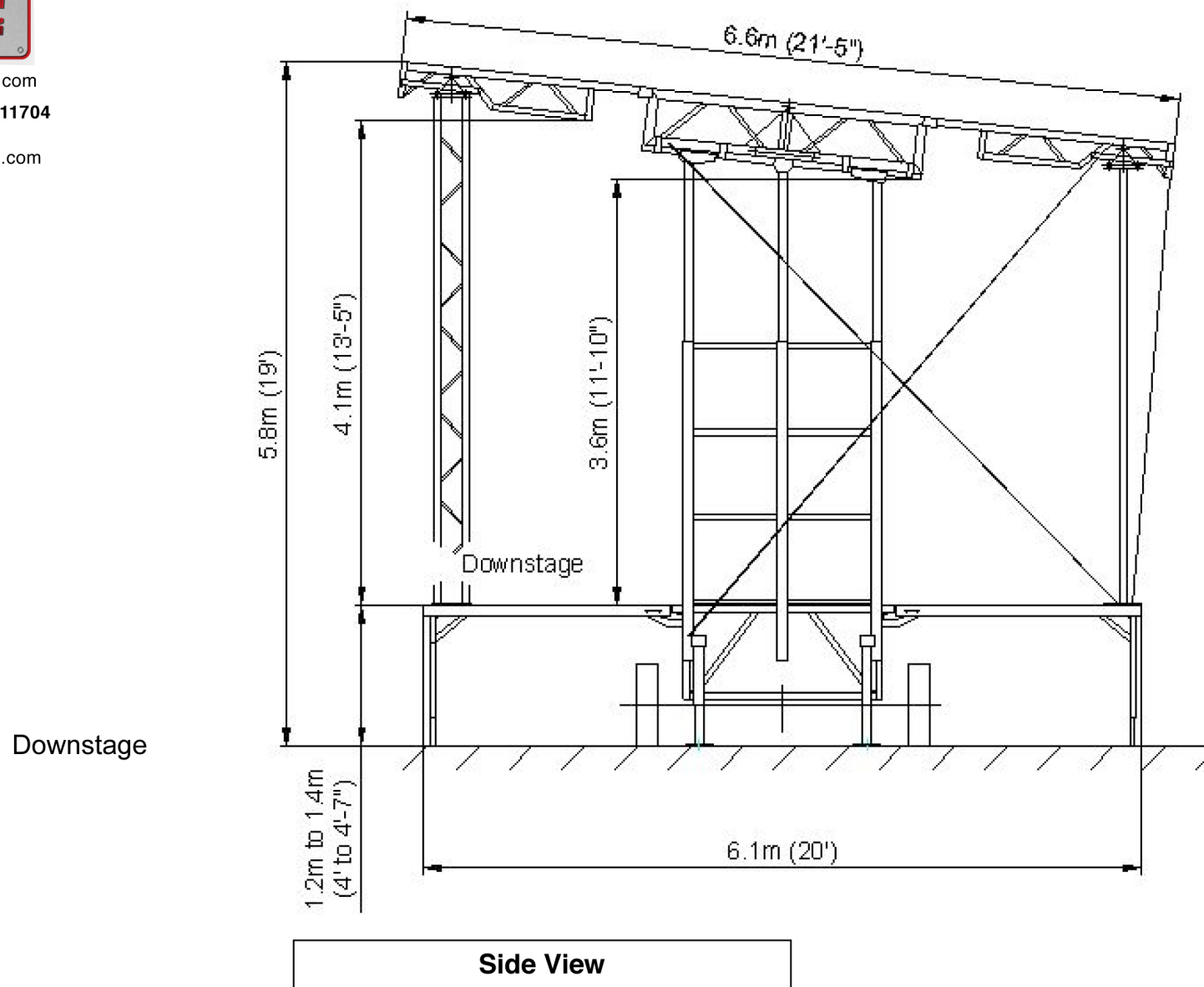
©2008 – All rights reserved, Karl Eckart Fahrzeugbau GmbH. Any and all forms of adaption or reproduction of this document including plans and drawings found herein, in whole or in part, are strictly forbidden without the written authorisation of Karl Eckart Fahrzeugbau GmbH.

Date: 2008-02-05  
Revision 0



www.mobilestagemanufacturing.com  
 100 Eads St. West Babylon, NY 11704  
 (516) 882-5412  
 Info@MobileStageManufacturing.com

## Stagemobil XL



Stage specifications subject  
 To change without notice  
 Figures are within inch or  
 cm to actual size

©2008 – Allrights reserved, Karl Eckart Fahrzeugbau GmbH. Any and all forms of adaption or reproduction of this document including plans and drawings found herein, in whole or in part, are strictly forbidden without the written authorisation of Karl Eckart Fahrzeugbau GmbH.

Date: 2008-02-05  
 Revision 0



www.mobilestagemanufacturing.com  
100 Eads St. West Babylon, NY 11704  
(516) 882-5412  
Info@MobileStageManufacturing.com

## Stagemobil XL



Downstage  
Capacity: 100 lbs/ft<sup>2</sup> (5 kN/m<sup>2</sup>)

**Floor View**

Stage specifications subject  
To change without notice  
Figures are within inch or  
cm to actual size

©2008 – Allrights reserved, Karl Eckart Fahrzeugbeu GmbH. Any and all forms of adaption or reproduction of this document including plans and drawings found herein, in whole or in part, are strictly forbidden without the written authorisation of Karl Eckart Fahrzeugbau GmbH.

Date: 2008-02-05  
Revision 0



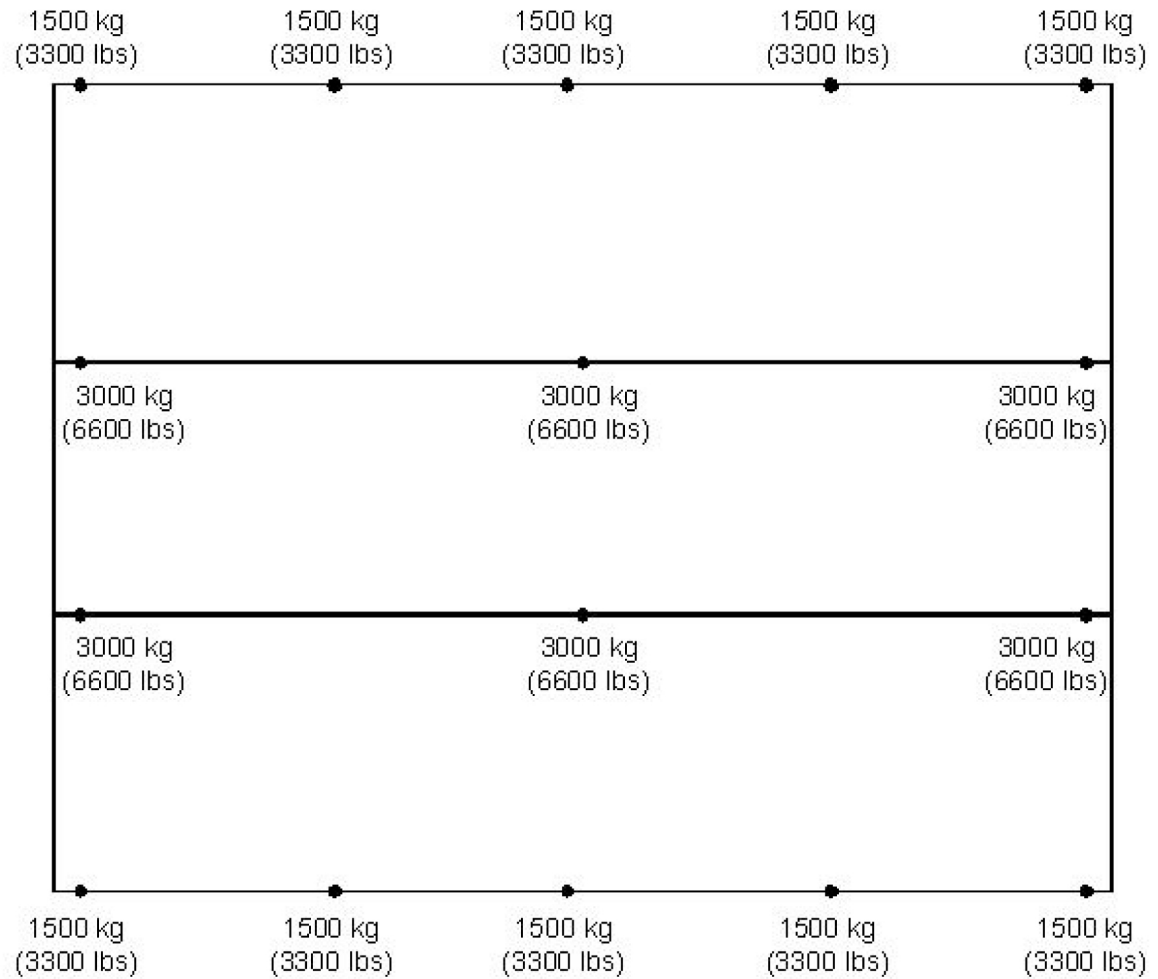
www.mobilestagemanufacturing.com

100 Eads St. West Babylon, NY 11704

(516) 882-5412

Info@MobileStageManufacturing.com

## Stagemobil XL



Downstage

**Ground Support Capacity**

● Floor stabilizers, extensions and leveling jacks.

\*Nominal specifications subject to change with notice.

Stage specifications subject  
To change without notice  
Figures are within inch or  
cm to actual size

©2008 – Allrights reserved, Karl Eckart Fahrzeugbeu GmbH. Any and all forms of adaption or reproduction of this document including plans and drawings found herein, in whole or in part, are strictly forbidden without the written authorisation of Karl Eckart Fahrzeugbau GmbH.

Date: 2008-02-05  
Revision 0

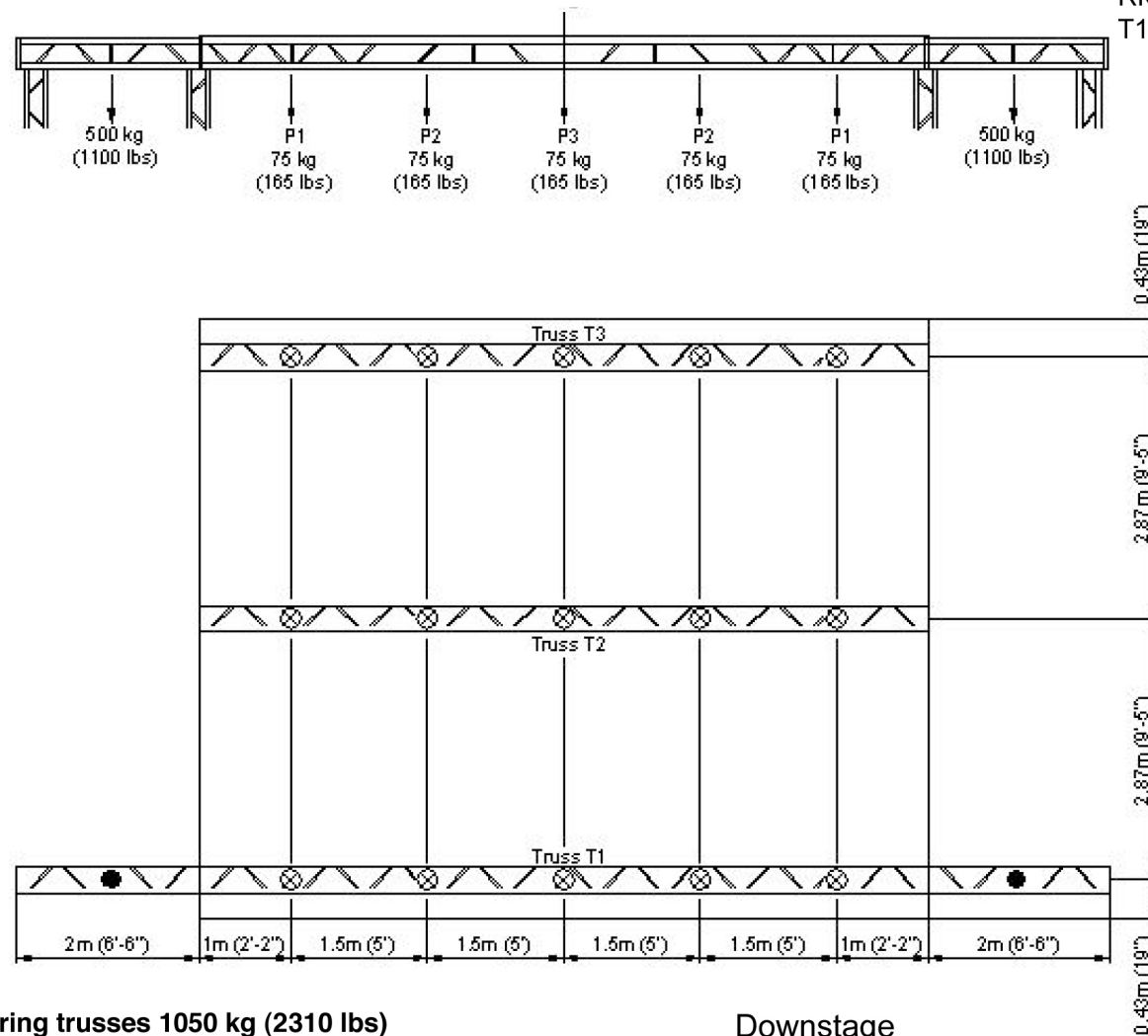


www.mobilestagemanufacturing.com  
 100 Eads St. West Babylon, NY 11704  
 (516) 882-5412  
 Info@MobileStageManufacturing.com

## Stagemobil XL

### LOAD BEARING TRUSSES

Total Maximum 350 kg (770 lbs)  
 RIGGING PATTERNS  
 T1-T3: USE P1 or P2 or P3



**Maximum load bearing capacity of all 3 bearing trusses 1050 kg (2310 lbs)**

Downstage

● Rigging point maximum capacity: 500 kg (1100 lbs)

⊗ Rigging point maximum capacity: 75 kg (165 lbs)

All loads should be evenly distributed.

Stage specifications subject  
 To change without notice  
 Figures are within inch or

©2008 – All rights reserved, Karl Eckart Fahrzeugbau GmbH. Any and all forms of adaption or reproduction of this document including plans and drawings found herein, in whole or in part, are strictly forbidden without the written authorisation of Karl Eckart Fahrzeugbau GmbH.

Date: 2008-02-05  
 Revision 0

**Rigging Plan**